

Prevalence of Hypertension and Its Associated Factors among Adults in Selected Areas of Bangladesh: A Community Based Cross-sectional Study

Md. Nahian Rahman^{1*}, Syeda Saima Alam², Shaidaton Nisha¹, Fathima Nusrath Zaman³, Maherun Nesa⁴, Sharif Muhammad Faizul Alam⁵, Faroque Md Mohsin⁶, Mahmudul Mannan⁷, Md. Mahedi Hasan⁸, Md. Mahbubur Rahman¹, Smita Roy Tory¹, Sabrina Rahman⁹, Abu Zobayed¹⁰, Sumaiya Jahan Dina¹, Khaleida Islam¹¹

¹MSc, Institute of Nutrition and Food Science, University of Dhaka, Bangladesh

²Lecturer, Department of Food Technology and Nutrition Science, Noakhali Science and Technology University, Bangladesh

³Assistant Professor, Department of Radiology and Imaging, Holy Family Red Crescent Medical College, Bangladesh

⁴Registrar, Sheikh Hasina National Institute of Burn and Plastic Surgery, Bangladesh

⁵Deputy Secretary, Health Services Division, Ministry of Health and Family Welfare, Bangladesh

⁶Medical Officer, Directorate General of Health Services, Ministry of Health and Family Welfare, Bangladesh

⁷Post Graduate Diploma, Department of Health Research Methods, Evidence and Impact, McMaster University, Canada

⁸BSc (Institute of Nutrition and Food Science, Dhaka University, Bangladesh), MPH (Northern University)

⁹BSc (Institute of Nutrition and Food Science, Dhaka University), MPH (North South University)

¹⁰M.Pharm, Department of Clinical Pharmacy & Pharmacology, Faculty of Pharmacy, University of Dhaka, Bangladesh

¹¹Professor, Institute of Nutrition and Food Science, University of Dhaka, Bangladesh

*Corresponding author: rahman_nahian@yahoo.com

Received July 04, 2021; Revised August 09, 2021; Accepted August 18, 2021

Abstract Background: Hypertension is a silent killer and an overwhelming global public health challenge. This study aimed to determine the prevalence and associated factors of hypertension among adults in Bangladesh. **Methods:** A community-based cross-sectional study design was conducted among 400 adults who lived in Dhaka, Mymensingh, Sylhet and Khulna District. Data were collected using a structured questionnaire that is adapted from the WHO Stepwise approach. Data was analyzed by SPSS version 25. Descriptive statistics and bivariate logistic regression analysis were conducted and statistical significance was declared at a p-value ≤ 0.05 . **Results:** This study identified a high prevalence of hypertension in the study area and it was 39.75%. Among the male the prevalence was 23.5% and the prevalence was 16.5% among female. In this study hypertension was significantly associated with the age group 51-65 years (OR=1.02; CI 0.557-1.862), ever smoking (OR= 2.59; CI 1.718-3.917) consume less fruits (OR=3.125; CI 0.839-11.632) and vegetable (OR=2.25; CI 1.364-3.725), physically inactive (OR=1.48; CI 0.973-2.252) overweight (OR=7.98; CI 4.612-13.793) and had diabetes mellitus (OR=2.38; CI 1.213-4.659). **Conclusion:** The prevalence of hypertension was considerably higher in this study area. Hence, the health care system needs to establish strategies to improve the diagnostic and screening services. Community-level intervention and regular assessment, screening, and diagnosis of behavioral, socio-demographic, and physiological risk factors, screening, should be institutionalized to address the occult burden of hypertension.

Keywords: hypertension, adults, Bangladesh, cross-sectional study, prevalence, associated factors

Cite This Article: Md. Nahian Rahman, Syeda Saima Alam, Shaidaton Nisha, Fathima Nusrath Zaman, Maherun Nesa, Sharif Muhammad Faizul Alam, Faroque Md Mohsin, Mahmudul Mannan, Md. Mahedi Hasan, Md. Mahbubur Rahman, Smita Roy Tory, Sabrina Rahman, Abu Zobayed, Sumaiya Jahan Dina, and Khaleida Islam, "Prevalence of Hypertension and Its Associated Factors among Adults in Selected Areas of Bangladesh: A Community Based Cross-sectional Study." *American Journal of Hypertension Research*, vol. 8, no. 1 (2021): 1-7. doi: 10.12691/ajhr-8-1-1.

1. Background

Hypertension is an important concern in public health [1,2,3,4]. It is associated with life-threatening complications such as cerebrovascular accidents, coronary

artery disease, congestive heart failure, peripheral arterial diseases and renal failure [5,6]. In 2015 it was reported that approximately 1.13 billion adults had hypertension around the world [7] and it contributed nearly 211.8 million disability adjusted life years (DALYS) [8]. Globally, almost one billion adults had hypertension in 2000 and this is predicted to increase to 1.56 billion by

2025. The prevalence of hypertension is rapidly rising in developing countries and is a major leading cause of disability and death [9,10]. Limited data regarding the trends of prevalence of hypertension stated that it has increased in developing countries in recent years while it persisted stable or declined in developed countries [11]. Currently 23 countries are responsible for about 80.0% of the total burden of chronic diseases mortality in developing countries. Among these countries, Bangladesh has the ninth highest rate of age-standardized rates of deaths due to chronic illnesses, mostly due to diabetes and cardiovascular diseases [4,12]. Bangladesh is in the middle of an epidemiologic transition. This country is beginning to witness a shift in the major causes of death from nutritional deficiencies and infectious diseases to those due to chronic diseases [4]. Factors attributed to the increased prevalence of hypertension are the growth of the population, aging of the population, and behavioral risk factors, such as poor diet, smoking, physical activity, harmful use of alcohol, and overweight or obesity [13,14]. However, there is limited study in Bangladesh, a country where the highest mortality rate is occurred due to chronic illness. Hence we conducted a study to determine the prevalence, and identify factors associated with hypertension among adults in selected areas of Bangladesh.

2. Methods

2.1. Study Settings and Participants

This study was conducted among 400 adults who lived in Dhaka, Mymensingh, Sylhet and Khulna District for more than six months before the survey. Multistage sampling technique was used; for selecting the primary sampling units, four districts were randomly selected from the total of 8 districts. Sample size was equally distributed to each of the selected districts. Finally, systematic random sampling technique was employed to select households for data collection. From the selected households, eligible adults were identified, and if there were more than one adult were found in a household, and then one was randomly selected.

2.2. Data Collection and Measurement

The WHO STEPS instrument was used to collect the data which contains three components of risk factor measurement which are demographic and behavioral measurement, physical measurement, and biochemical measurements [15]. The tool was then translated to Bengali. To balance gender composition for the interview, data were collected on weekends and on working days in the afternoon during which time eligible adults were expected to be at home. Before the actual data collection was started, a pre-test was conducted to check for the validity of the instruments and then necessary modifications were made.

Standard procedures and the calibrated instruments were used to conduct anthropometric measurement. Weight and height was measured using digital scale and stadiometer respectively. For measuring blood pressure (BP) digital BP apparatus was used. BP was recorded three times, three to five minutes apart from the left arm while the person was sitting and the arm was resting on a flat surface and The average of the last two measures was used to identify elevated BP. Digital glucometers were used for biochemical testing to measure capillary blood sugar after subject was asked about the time lapse from the last meal.

2.3. Operational Definition

Digital glucometers were used for biochemical testing according to WHO and International Diabetic Association (IDA) define diabetes as fasting blood sugar ≥ 26 mg/dl or random blood sugar ≥ 200 mg/dl; hypertension: persistently elevated blood pressure, SBP ≥ 140 mmHg or DBP ≥ 90 mmHg, or reported uses of antihypertensive medication [16,17,18]. In this study, ever smoking was defined as smoking cigarette at least one in lifetime. Current alcohol consumption was defined as intake of alcohol during the last 30 days. Body mass index was used to classify nutritional status of study population. Asian criteria-based BMI was used as follows: underweight: BMI < 18.5 kg/m², normal-weight: 18.5-22.9 kg/m², overweight: 23.0-27.5kg/m², and obese: > 27.5 kg/m² [19]. Physical activity was measured as total global physical activity: inactive: < 600 MET-minute and active: ≥ 600 MET-minute [20].

2.4. Statistical Analysis

The data were checked and entered in to SPSS 23.0 statistical software. To identify association between hypertension and its associated factors a regression model was used. Statistical tests were considered significant at P-value < 0.05 .

3. Results

A total 400 respondents participated in the study. The mean age of participants was 43.43 ± 19.82 years. Majority (58.75%) of the study participants were male. Approximately Two thirds of the respondents (68.5%) were. 35% of the study participants were farmer whereas 22% were housewife (Table 1).

Dietary and behavioral characteristics of the respondents in selected areas of Bangladesh:

In this study we have found that 43.25% respondents were smokers and only 2.5% participants consumed alcohol over the last 30 days before data collection. 76.5% participants ate fruits two or fewer days a week. Forty-seven (11.75%) participants ate vegetables for two or fewer days during regular week days. One hundred thirty seven (34.25%) adults were physical inactive (Table 2).

Table 1. Sociodemographic characteristics of adults in selected areas of Bangladesh

Characteristics	Frequency	Percent
Sex		
Male	235	58.75
Female	165	41.25
Age		
18-35	115	28.75
36-50	126	31.5
51-65	74	18.5
66-93	85	21.25
Education		
HSC and above	101	13.5
SSC	119	29.75
Primary	154	38.5
No education	73	18.25
Marital status		
Married	274	68.5
Single	86	21.5
Divorced	23	5.75
Widowed	17	4.25
Districts		
Dhaka	100	25
Mymensingh	100	25
Sylhet	100	25
Khulna	100	25
Occupation		
Housewife	88	22
Farmer	140	35
Private Job	72	18
Unemployed	100	25

Table 2. Dietary and behavioral characteristics of the respondents in selected areas of Bangladesh

Variables	Frequency	Percentage
Ever smoking cigarette		
Yes	173	43.25
No	227	56.75
Current alcohol consumption		
Yes	10	2.5
No	390	97.5
Fruits consumption per week		
Two or fewer	306	76.5
Three to four	73	18.25
Five or more	21	5.25
Vegetables consumption per week		
Two or fewer	47	11.75
Three to four	82	20.5
Five or more	271	67.75
Total physical activities		
Active	263	65.75
Inactive	137	34.25

3.1. Prevalence of Hypertension

The mean Systolic blood pressure (SBP) was 126.48 ± 18.11 mmHg in men and 122.07 ± 14.61 mmHg in women. However, there was no statistically significant difference in systolic blood pressure between male and female participants ($t=1.03$ and $P<0.3275$) (Figure 1). The mean Diastolic blood pressure (DBP) was 82.34 ± 13.42 mmHg in men and 76.0 ± 11.24 mmHg in women with statistically significant difference ($t=2.58$ and $P<0.0001$) (Figure 2). Both SBP and DBP were significantly increased with age (SBP, $F=12.10$, $P<0.001$; DBP, $F=7.67$, $P<0.001$) (Figure 1 and Figure 2). Using the 2017 ACC/AHA guidelines, the prevalence of hypertension was 39.75% (Table 3). Majority (61.5%) of adults were not aware of their elevated blood pressure status.

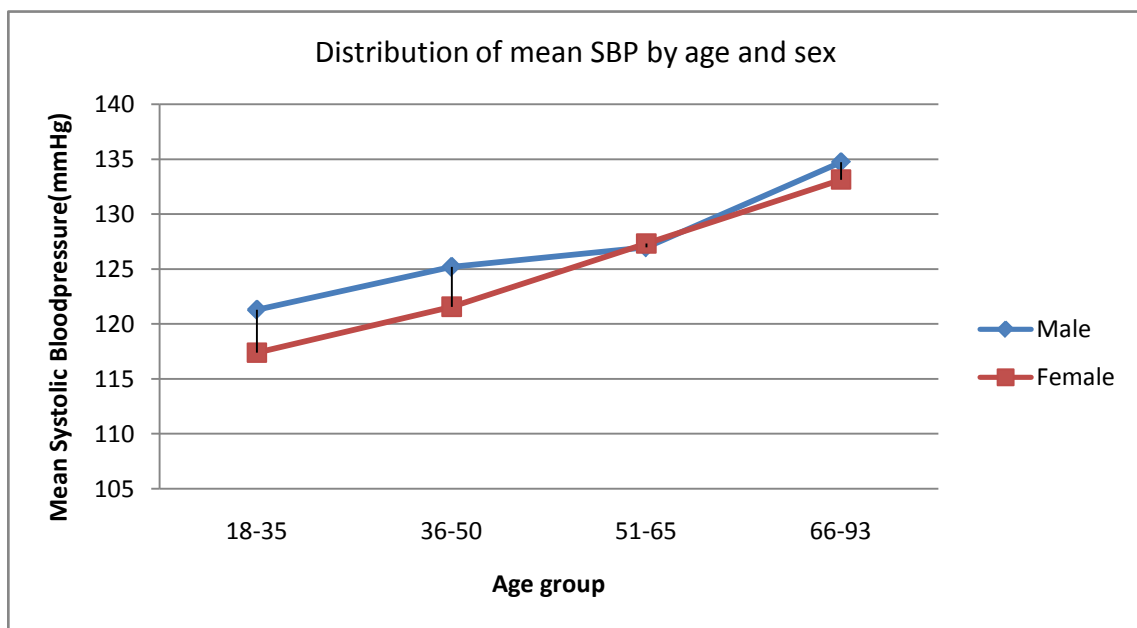


Figure 1. Distribution of mean SBP by age and sex

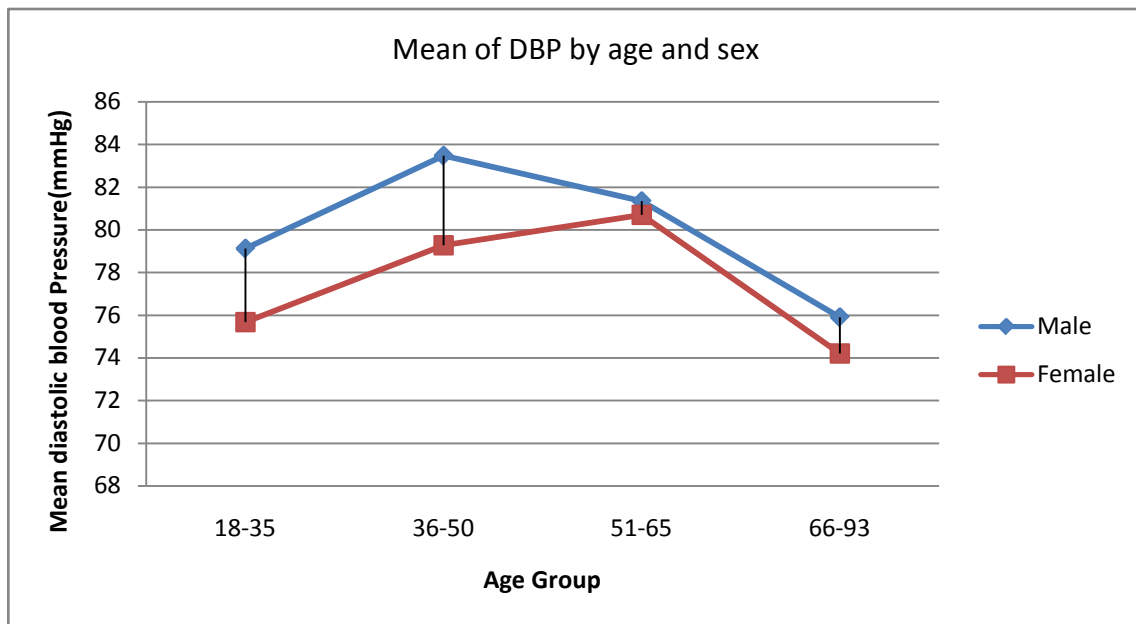


Figure 2. Distribution of mean DBP by age and sex

Table 3. Distribution of Hypertensive patients

Blood Pressure	%(SBP)	n(SBP)	%(DBP)	n(DBP)
Normal BP	52.5	210	52.5	210
Elevated BP	7.75	31	7.75	31
Stage-1 Hypertension	15	60	6.5	26
Stage-2 Hypertension	24.75	99	33.25	133
Total	100	400	100	400

3.2. Factors Associated with Hypertension

A logistic regression models were used to identify the factors associated with hypertension.

Table 4. Factors affecting hypertension

Variables	Hypertension		Hypertension		OR(ODD Ratio) CI (95%)
	Yes(N&%)		No (N&%)		
Sex					
Male	93	39.57	142	60.43	1
Female	66	40	99	60	1.02 (0.677-1.528)
Age					
18-35	43	37.39	72	62.61	1
36-50	56	44.44	70	55.56	1.34 (0.799-2.244)
51-65	28	37.84	46	62.16	1.02(0.557-1.862) *
66-93	32	37.65	53	62.35	1.01(0.530-1.917)
Residence					
Dhaka	37	37	63	63	1
Mymensingh	36	36	64	64	0.957(0.538-1.703)
Sylhet	45	45	55	55	1.39(0.791-2.452)
Khulna	41	41	59	59	1.18(0.669-2.089)
Occupation					
Housewife	38	43.18	50	56.82	1.093(0.612-1.953)
Farmer	53	37.86	87	62.14	0.787(0.518-1.481)
Private Job	27	37.5	45	62.5	0.86(0.463-1.607)
Unemployed	41	41	59	59	1

Variables	Hypertension		Hypertension		OR(ODD Ratio) CI (95%)
	Yes(N&%)	No (N&%)	Yes(N&%)	No (N&%)	
Ever smoking cigarette					
Yes	91	52.6	82	47.4	2.59 (1.718-3.917) **
No	68	29.95	159	70.04	1
Current alcohol consumption					
Yes	2	20	8	80	0.37(0.077-1.770)
No	157	40.26	233	59.74	1
Fruits consumption per week					
Two or fewer	131	40.18	195	59.82	4.03(1.163-13.959)
Three to four	25	34.25	48	65.75	3.125(0.839-11.632) *
Five or more	3	14.29	18	85.71	1
Vegetables consumption per week					
Two or fewer	27	57.45	20	42.55	2.76(1.468-5.190)
Three to four	43	52.44	39	47.56	2.25 (1.364-3.725) **
Five or more	89	32.84	182	67.16	1
Physical activity status					
Active	96	36.5	167	63.5	1
Inactive	63	45.99	74	54.01	1.48(0.973-2.252) **
Nutritional Status					
Underweight	11	23.92	35	76.08	0.87(0.417-1.822)
Normal Weight	62	26.5	172	73.5	1
Overweight	69	74.19	24	25.81	7.98(4.612-13.793) **
Obese	17	62.96	10	37.04	4.72(2.049-10.851)
Diabetes Mellitus					
Yes	23	58.97	16	41.02	2.38 (1.213-4.659) *
No	136	37.67	225	62.33	1

*p value<0.05, **p value<0.01.

After applying logistic regression analysis, a significant association between hypertension and respondent's age, smoking status, fruits consumption, vegetables consumption, physical activity, overweight and presence of diabetes were found. Respondent whose age between 51-65 years had 1.02 higher chance of hypertension than those age were between 18-35 years. Respondents who had smoking habit had 2.59 higher odds of having hypertension. Those who consume fruits three to four days per week had 3.125 higher chance of hypertension and those who consume vegetable three to four days per week had 2.25 higher chance of hypertension. Respondents who were physically inactive had 1.48 times higher chance of hypertension. Those who were overweight and had diabetes mellitus had 7.98 and 2.38 times higher chance of having hypertension.

4. Discussion

Just like other developing countries, Bangladesh is going through a rapid demographic and epidemiological transition. Nutrition is the key ingredient in all such transitions, and plays a predominant role. This cross-sectional community based study identified a high prevalence of hypertension in the study area was 39.75%. The prevalence of hypertension considerably higher than

what has been reported in previous study conducted in Bangladesh. [4]. In India The prevalence of hypertension was found to be 23.24%. [21] and in Nepal the prevalence was 32.5% [22].

Among the male the prevalence was 23.5% and the prevalence was 16.5% among female. Similarly, several studies came out with the higher prevalence of hypertension in men than [22,23,24,25]. One of the possible explanations for this is woman consume less tobacco and they are more interested in health care services utilization and report their poor health when it is necessary and therefore they are more likely to have better health [26]. But this findings are contradictory to other findings where they found that women had more chance of developing hypertension compared to men [10,18,27].

In this study it was found that as the age was advancing so did the prevalence of hypertension. Similar findings were reported by other studies. Those studies found that advancing age was positively related to hypertension [1,24,28,29].

In this study it was found that hypertension was more prevalent in tobacco users (OR: 2.59) as compared to nonusers. This findings was consistence with other study findings [22,30,31]. But there are several other studies with contradictory findings [1,29,32]. Smoking cigarettes is known to impair the action of insulin, and may result in

insulin resistance and It may also cause high BP by increasing sympathetic activity. [33]

In this study overweight and physical inactivity were found to be independent risk factors for developing hypertension. This finding was in line with previous reports from Uganda, India, Ethiopia and Nepal [10,17,21,22,34]. Urbanization are associated with changes in dietary habits and sedentary lifestyle which lead to obesity and those are associated as contributing factors in the development of high blood pressure. Reducing overweight and obesity through proper nutrition and increased regular physical activity is the best way to prevent hypertension [35].

Respondents who had diabetes were about 2.38 times more likely to have hypertension. This could be because of the fact that both diseases share common risk factors and/or because of both (diabetes and hypertension) diseases can be mutually exclusive [17]. This finding is in agreement with several other studies [17,36,37].

In this study it was found that those who consume less fruits and vegetables had higher chance of developing hypertension and the odds are 3.12 and 2.25 respectively. This study findings further strengthens the previous findings [38,39]. That is because fruits and vegetable are high in vitamin C, folic acid, potassium, magnesium and carotenoid which have suggested to lower BP through improving endothelial function. fruits and vegetable also contain high amount of dietary fiber that have impact on diet structure by reducing fat intake which has been shown to be significantly associated with increased risk of hypertension [40].

5. Conclusion and Recommendation

From the results of this study, it can be said that the prevalence hypertension is high in Bangladesh. We found that men are at more risk of developing hypertension than female. We need programs to improve surveillance systems and implement community-based screening programs to detect hypertension as early as possible. Interventions like improving health literacy to increase the awareness, weight management, increased physical activity, reduction in tobacco consumption, increased fruits and vegetables consumption are the need of the hour and are therefore recommended.

Acknowledgements

This paper and the research behind it would not have been possible without the extraordinary support of Khaleda Islam, Professor of Institute of Nutrition and Food Science, University of Dhaka, Bangladesh. Her experience, enthusiasm and extreme attention to every detail have been a motivation and kept our work on track. We would also like to thank Shaidaton Nisha, Omar Faruk, Jakaria Al Mamun, Md. Sohel Rana for the assistance and encouragement to pursue to the study. We also wish to thank our family members for the unconditional love and support. Last but not the list, we thank Almighty for reasons too numerous to mention.

Ethical Consideration

This study was approved by Ethical Review Board of University of Dhaka. The researchers clarified the objective of this research and obtained informed consent from the respondents.

Funding

No funding to be mentioned.

Competing Interest

Authors declare to have no conflict of interest.

References

- [1] Erem C, Hacıhasanoglu A, Kocak M, Deger O, Topbas M. Prevalence of prehypertension and hypertension and associated risk factors among Turkish adults: Trabzon Hypertension Study. *J Public Health (Bangkok)*. 2009; 31(1): 47-58.
- [2] Abebe SM, Berhane Y, Worku A, Getachew A. Prevalence and associated factors of hypertension: a cross-sectional community based study in Northwest Ethiopia. *PLoS One*. 2015; 10(4): e0125210.
- [3] Mishra CP, Kumar S. Risk factors of hypertension in a rural area of Varanasi. *Indian J Prev Soc Med*. 2011; 42(1): 101-11.
- [4] Ahmed A, Rahman M, Hasan R, Shima SA, Faruquee MH, Islam T, et al. Hypertension and associated risk factors in some selected rural areas of Bangladesh. *Int J Res Med Sci*. 2014; 2(3): 925.
- [5] Collaboration APCS. Blood pressure indices and cardiovascular disease in the Asia Pacific region: a pooled analysis. *Hypertension*. 2003; 42(1): 69-75.
- [6] Giles TD, Materson BJ, Cohn JN, Kostis JB. Definition and classification of hypertension: an update. *J Clin Hypertens*. 2009; 11(11): 611-4.
- [7] Zhou B, Bentham J, Di Cesare M, Bixby H, Danaei G, Cowan MJ, et al. Worldwide trends in blood pressure from 1975 to 2015: a pooled analysis of 1479 population-based measurement studies with 19.1 million participants. *Lancet*. 2017; 389(10064): 37-55.
- [8] Gakidou E, Afshin A, Abajobir AA, Abate KH, Abbafati C, Abbas KM, et al. Global, regional, and national comparative risk assessment of 84 behavioural, environmental and occupational, and metabolic risks or clusters of risks, 1990-2016: a systematic analysis for the Global Burden of Disease Study 2016. *Lancet*. 2017; 390(10100): 1345-422.
- [9] Chockalingam A, Campbell NR, Fodor JG. Worldwide epidemic of hypertension. *Can J Cardiol*. 2006; 22(7): 553-5.
- [10] Kiber M, Wube M, Temesgen H, Woyraw W, Belay YA. Prevalence of hypertension and its associated factors among adults in Debre Markos Town, Northwest Ethiopia: community based cross-sectional study. *BMC Res Notes*. 2019; 12(1): 406.
- [11] Kearney PM, Whelton M, Reynolds K, Whelton PK, He J. Worldwide prevalence of hypertension: a systematic review. *J Hypertens*. 2004; 22(1): 11-9.
- [12] Abegunde DO, Mathers CD, Adam T, Ortegón M, Strong K. The burden and costs of chronic diseases in low-income and middle-income countries. *Lancet*. 2007; 370(9603): 1929-38.
- [13] Organization WH, others. A global brief on hypertension: silent killer, global public health crisis: World Health Day 2013. 2013.
- [14] Islam JY, Zaman MM, Haq SA, Ahmed S, Al-Quadir Z. Epidemiology of hypertension among Bangladeshi adults using the 2017 ACC/AHA hypertension clinical practice guidelines and joint National Committee 7 guidelines. *J Hum Hypertens*. 2018; 32(10): 668-80.
- [15] STEPS WHO. A Framework-The WHO STEPwise approach to surveillance of noncommunicable diseases (STEPS). WHO; 2002.
- [16] Angaw K, Dadi AF, Alene KA. Prevalence of hypertension among federal ministry civil servants in Addis Ababa, Ethiopia: a call for

- a workplace-screening program. *BMC Cardiovasc Disord.* 2015; 15(1): 76.
- [17] Awoke A, Awoke T, Alemu S, Megabiaw B. Prevalence and associated factors of hypertension among adults in Gondar, Northwest Ethiopia: a community based cross-sectional study. *BMC Cardiovasc Disord.* 2012; 12(1): 113.
- [18] Demisse AG, Greffie ES, Abebe SM, Bulti AB, Alemu S, Abebe B, et al. High burden of hypertension across the age groups among residents of Gondar city in Ethiopia: a population based cross sectional study. *BMC Public Health.* 2017; 17(1): 647.
- [19] WHO EC. Appropriate body-mass index for Asian populations and its implications for policy and intervention strategies. *Lancet (London, England).* 2004; 363(9403): 157.
- [20] Roba HS, Beyene AS, Mengesha MM, Ayele BH. Prevalence of hypertension and associated factors in Dire Dawa city, Eastern Ethiopia: a community-based cross-sectional study. *Int J Hypertens.* 2019; 2019.
- [21] Patil CR, Sahoo DP, Dhoble M, Kherde A, Inamdar A. Prevalence of hypertension and its associated risk factors in young adults attending a tertiary care institute of Nagpur: A cross sectional study. *Int J Community Med Public Heal.* 2017; 4: 3630-5.
- [22] Dhungana RR, Pandey AR, Bista B, Joshi S, Devkota S. Prevalence and associated factors of hypertension: a community-based cross-sectional study in municipalities of Kathmandu, Nepal. *Int J Hypertens.* 2016; 2016.
- [23] Singh R, Sinha RK, Mani C, Singh R, Pal R. Burden and vulnerability of hypertension in a rural population of Patna, Bihar, India. *South East Asia J Public Heal.* 2011; 1(1): 53-8.
- [24] Gao Y, Chen G, Tian H, Lin L, Lu J, Weng J, et al. Prevalence of hypertension in China: a cross-sectional study. *PLoS One.* 2013; 8(6): e65938.
- [25] Dzudie A, Kengne AP, Muna WFT, Ba H, Menanga A, Kouam CK, et al. Prevalence, awareness, treatment and control of hypertension in a self-selected sub-Saharan African urban population: a cross-sectional study. *BMJ Open.* 2012; 2(4).
- [26] Singh S, Shankar R, Singh GP. Prevalence and associated risk factors of hypertension: a cross-sectional study in urban Varanasi. *Int J Hypertens.* 2017; 2017.
- [27] Helelo TP, Gelaw YA, Adane AA. Prevalence and associated factors of hypertension among adults in Durame Town, Southern Ethiopia. *PLoS One.* 2014; 9(11):e112790.
- [28] Tabrizi JS, Sadeghi-Bazargani H, Farahbakhsh M, Nikniaz L, Nikniaz Z. Prevalence and associated factors of prehypertension and hypertension in Iranian population: the Lifestyle Promotion Project (LPP). *PLoS One.* 2016; 11(10): e0165264.
- [29] Costa JSD da, Barcellos FC, Sclowitz ML, Sclowitz IKT, Castanheira M, Olinto MTA, et al. Hypertension prevalence and its associated risk factors in adults: a population-based study in Pelotas. *Arq Bras Cardiol.* 2007; 88(1):59-65.
- [30] Reddy SS, Prabhu GR, others. Prevalence and risk factors of hypertension in adults in an Urban Slum, Tirupati, AP. *Indian J community Med.* 2005; 30(3): 84.
- [31] Singh RB, Fedacko J, Pella D, Macejova Z, Ghosh S, De AK, et al. Prevalence and risk factors for prehypertension and hypertension in five Indian cities. *Acta Cardiol.* 2011; 66(1): 29-37.
- [32] Peltzer K, Phaswana-Mafuya N. Hypertension and associated factors in older adults in South Africa. *Cardiovasc J Afr.* 2013; 24(3): 66.
- [33] Kong C, Nimmo L, Elatrozy T, Anyaoku V, Hughes C, Robinson S, et al. Smoking is associated with increased hepatic lipase activity, insulin resistance, dyslipidaemia and early atherosclerosis in Type 2 diabetes. *Atherosclerosis.* 2001; 156(2): 373-8.
- [34] Wamala JF, Karyabakabo Z, Ntungutse D, Guwatudde D. Prevalence factors associated with hypertension in Rukungiri district, Uganda-a community-based study. *Afr Health Sci.* 2009; 9(3).
- [35] Goodpaster BH, DeLany JP, Otto AD, Kuller L, Vockley J, South-Paul JE, et al. Effects of diet and physical activity interventions on weight loss and cardiometabolic risk factors in severely obese adults: a randomized trial. *Jama.* 2010; 304(16): 1795-802.
- [36] Shishani K, Dajani R, Khader Y. Hypertension risk assessment in the largest ethnic groups in Jordan. *J Immigr Minor Heal.* 2013; 15(1): 43-8.
- [37] Rodrigues Barbosa A, Ferreti Borgatto A. Arterial hypertension in the elderly of Bridgetown, Barbados: prevalence and associated factors. *J Aging Health.* 2010; 22(5): 611-30.
- [38] Borgi L, Muraki I, Satija A, Willett WC, Rimm EB, Forman JP. Fruit and vegetable consumption and the incidence of hypertension in three prospective cohort studies. *Hypertension.* 2016; 67(2): 288-93.
- [39] Li B, Li F, Wang L, Zhang D. Fruit and vegetables consumption and risk of hypertension: a meta-analysis. *J Clin Hypertens.* 2016; 18(5): 468-76.
- [40] Shouying C, Zhimei XI, Qun ZUO, others. Risk factors in rural residents with essential hypertension of different social economic levels. *Chin J Hypertens.* 2007; 15: 764-7.

